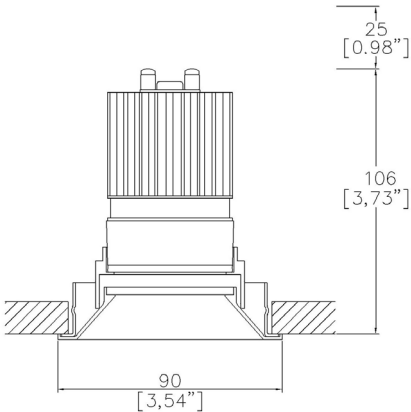


ProSpex PlusMini
Fixed Trim

| | |
|--------|----------|
| TM65.2 | 11kgCO2e |
| TM66 | 2.3 CEAM |



90mm (3.54”) overall trim diameter. Available with standard trim kit or plaster-in kit for flush appearance. Family of matching products also available.



750+LED-TR
Cut-out Ø82mm
Required depth height + 25mm^

| | | | |
|-----------------------------------|-------------|-------------|-------------|
| LED Source | LED51/3-WD | LED51/3-WD | LED51/3-WD |
| CCT | 2700K/3000K | 2700K/3000K | 2700K/3000K |
| Drive Current | 350mA | 350mA | 350mA |
| Power inc Driver | 13.4W | 13.4W | 13.4W |
| Beam Angle | NF (20°) | FL (41°) | WFL (57°) |
| Delivered Lumens | 1102 | 1089 | 968 |
| Delivered Intensisty cd | 6333 | 2137 | 1082 |
| Delivered Lumens per circuit watt | 82 | 81 | 72 |
| Forward Volt | 34V | 34V | 34V |
| CRI | ≥90 CRI | ≥90 CRI | ≥90 CRI |

Project Ref: _____

Location Ref: _____

Fixture Order Code: - -

Fixture
750+LED-TR Plus Mini Conical Fixed Trim with LED51

Finish

| | |
|------|--------------------|
| WH | White |
| BK | Black |
| RAL | Custom RAL Finish* |
| ABR1 | Antique Brass |
| ABZ1 | Antique Bronze |
| PCH1 | Polished Chrome |
| PNK1 | Polished Nickel |
| PBR1 | Polished Brass |

IP Rating

| | |
|----|------|
| 44 | IP44 |
| 54 | IP54 |



Module Order Code: - -

LED
LED51/3-WD LED50 ONE Gen3 Ambiance WarmDim

CCT

| | |
|------|---------------|
| 2718 | 2700K - 1800K |
| 3018 | 3000K - 1800K |

Beam

| | |
|-----|--------------|
| NF | Narrow Flood |
| FL | Flood |
| WFL | Wide Flood |

Driver Options:

Protocol

| | |
|---|------------------|
| S | Non-Dim |
| A | Analogue (0-10v) |
| P | Phase |
| D | DALI |
| B | Bluetooth** |

Emergency Options:

Emergency

| | |
|----|-------------------------------|
| E | Maintained 3hr Emergency |
| ED | Maintained 3hr DALI Self Test |
| ES | Maintained 3hr Self Test |

Finish selection



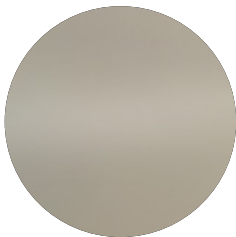
Antique Brass



Antique Bronze



Polished Brass



Polished Nickel



Polished Chrome

Accessories



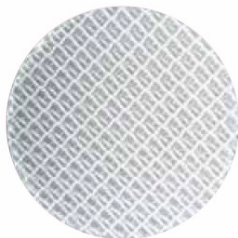
Honeycomb Louvre



Diffusing Lens



Frosted Lens



Heavy Spread Lens



Linear Spread Lens

Accessories Order Code:

- Louvre/Lens
- LL45

LLDF

LLFR

LLLS

LLHS
- Honeycomb Louvre

Diffusing Lens

Frosted Lens

Linear Spread Lens

Heavy Spread Lens

Technical Details

*Custom RAL code must be specified. Custom RAL colours can increase prices and lead times

Dimming. Whilst Lucent can offer the majority of its luminaires with various dimming options, it remains the responsibility of the specifier/installer to check and ensure compatibility of any control equipment used. Additional cabling may be required depending on the dimming protocol specified.

**Bluetooth (wireless) is the communication method. The exact dimming protocol must be confirmed to allow the selection of suitable drivers or bluetooth devices.

^ Depth indicated is the minimum recess depth for the luminaire with a remote mounted LED driver. Installing a driver through either the luminaire cut-out or installation kit may require additional recess depth, please refer to the relevant luminaire installation instructions for further details.Data correct at time of publishing

First Fix Requirement. Luminaire comprised of fixture body with ceiling trim and installation kit, which is to be fitted into the ceiling once finished. Ensure correct alignment of the installation kit before final assembly (see luminaire instllation instructions for details)

IP Rating. Tested from underside of the ceiling

Note that the picture of the finishes provided is for illustrative purposes only. The finishes may vary in colour, texture and appearance. Contact Lucent lighting Ltd for more information.

It is the policy of Lucent Lighting to continually review and improve its products and therefore reserve the right to change any details of product or withdraw specifications without prior notice.

Luminaires designed to comply with EN60598 and all other standards.

This specification sheet superseded all previous versions.

All intellectual property rights pertaining to the product described above and to this document are owned by or licensed to Lucent Lighting Ltd.

We reserve the right to take whatever action is necessary to protect those intellectual property rights.